

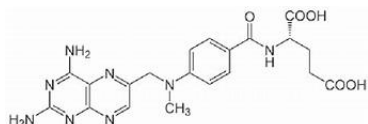
C_701_T (Sem-VII) CBSGS

Pharmaceutical chemistry-III

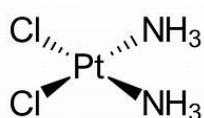
Sample MCQs

1. Identify alkylating agent as anticancer.

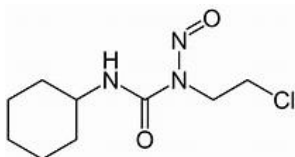
a.



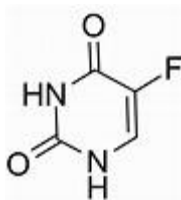
b.



c.



d.



2. Select drug that shows significant interaction with allopurinol

- a. 5-fluouracil
- b. Methotrexate
- c. Chlorambucil
- d. 6-mercaptopurine

3. Choose wrong combination of drug and mechanism

- a. Bleomycin- Prevent enzyme topoisomerase-II
- b. Carmustine-alkylation of DNA at O-6 position of guanine
- c. Busulfan- DNA strand cross linking
- d. Cytarabine – Inhibit enzyme topoisomerase-II

4. Which of the following drug is used in treatment of herpes virus?

- a. Amantadine
- b. Acyclovir
- c. Oseltamivir
- d. Azidothymidine

5. Which of the following statement is wrong?

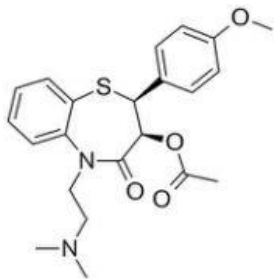
- a. Acyclovir inactivate DNA polymerase
- b. Idoxuridine inhibit thymidine phosphorylase
- c. Zidovudine inhibit HIV integrase
- d. Stavudine inhibit reverse transcriptase

6. Lopinavir is used in fixed dose combination with ritonavir

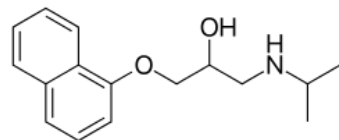
- a. It gives synergistic effect
- b. Increase duration of action of lopinavir
- c. It is inhibitor of CYP-450 CYP-3A
- d. Increase elimination half-life of ritonavir

7. Which of the following is calcium channel blocker?

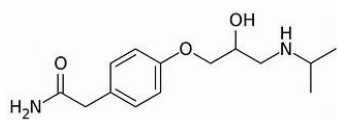
a.



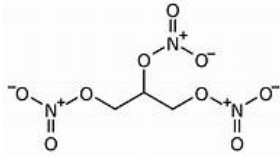
b.



c.



d.



8. Identify correct name of calcium channel blocker

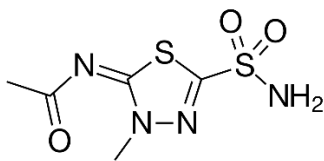
- dimethyl 2,6-dimethyl-4-(2-nitrophenyl)-1,4-dihydropyridine-3,5-dicarboxylate
- 4-Méthoxy-N-{2-[2-(1-méthyl-2-pipéridinyl) ethyl] phenyl} benzamide
- 2-amino-*N*-(2,6-dimethylphenyl) propenamide
- 2-(diethylamino)-*N*-(2,6-dimethylphenyl) acetamide

9. Choose correct combination of drug with its IUPAC

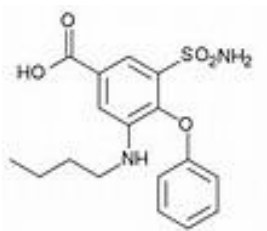
- Sotalol- 2-(butyl-1-benzofuran-3-yl)-[4-[2-(diethylamino) ethenyl]-3,5- diiodo phenyl] methanone
- Propranolol-*N*-[4-[1-hydroxy-2-(propan-2-ylamino) ethyl] phenyl] methanesulfonamide
- Encainide - 4-methoxy-*N*-[2-[2-(1-methylpiperidin-2-yl) ethyl] phenyl] benzamide
- Amiodarone - 1-naphthalen-1-yloxy-3-(propan-2-ylamino) propan-2-ol

10. Which of the following inhibit Na⁺/K⁺/2Cl⁻ symporter?

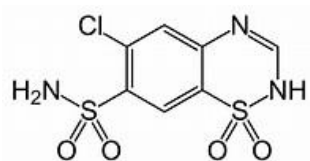
a.



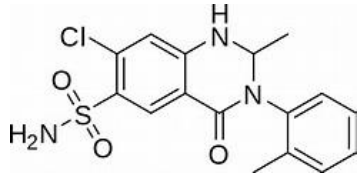
b.



c.



d.

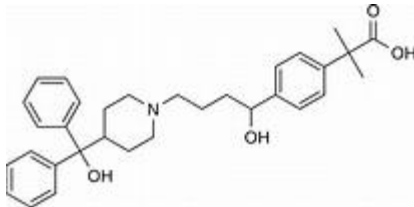


11. Which of the following diuretics metabolised into active substance canrenone?
- Furosemide
 - Spironolactone
 - Bumetanide
 - Amiloride
12. Which of the following is prodrug as ACE inhibitor?
- Lisinopril
 - Benazepril
 - Valsartan
 - Losartan
13. Choose correct statement of drug with its chemical class
- Captopril- Benzodiazepine
 - Enalapril – Triazole
 - Lisinopril – pyrrolidine
 - Candesartan – Proline
14. which of the following used in the treatment of Benign prostate hyperplasia?
- Prazosin
 - Terazosin
 - Labetolol
 - Carvedilol
15. Which is IUPAC name of drug as β -blocker?
- phthalazin-1-ylhydrazine
 - 7-chloro-3-methyl-4*H*-1 λ ⁶,2,4-benzothiadiazine 1,1-dioxide
 - 5-[3-(*tert*-butylamino)-2-hydroxypropoxy]-1,2,3,4-tetrahydronaphthalene-2,3-diol
 - 2-hydroxy-5-[1-hydroxy-2-(4-phenylbutan-2-ylamino) ethyl] benzamide
16. Identify following as HMG Co-A reductase inhibitor?
- Rosuvastatin

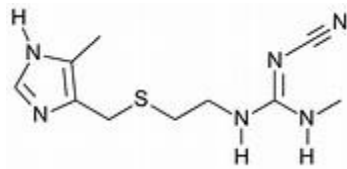
- b. Clofibrate
- c. Ciprofibrate
- d. Ezetimibe

17. Which of the following is belongs to H2 receptor antagonist?

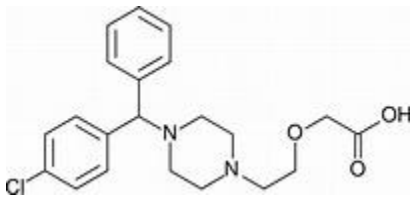
a.



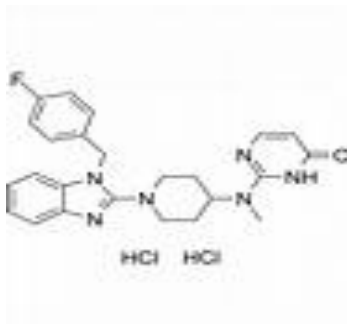
b.



c.



d.



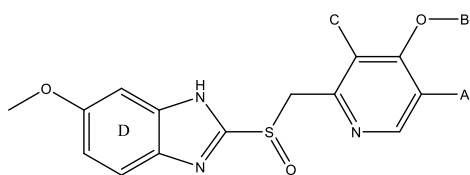
18. Which of the following antihistamine drug belongs to propylamine class?

- a. Cetrizine
- b. Chlorpheniramine
- c. Diphenhydramine
- d. Cyproheptadine

19. Which of the following is H1-antagonist?

- a. 2-[4-[1-hydroxy-4-[4-[hydroxy(diphenyl)methyl] piperidin-1-yl] butyl] phenyl]-2-methyl propanoic acid
- b. 1-cyano-2-methyl-3-[2-[(5-methyl-1*H*-imidazol-4-yl) methylsulfanyl] ethyl] guanidine
- c. (*E*)-1-*N'*- [2- [[5- [(dimethyl amino) methyl] furan-2-yl] methylsulfanyl] ethyl]-1-*N*-methyl-2-nitroethene-1,1-diamine
- d. 3-[[2-(diaminomethylideneamino)-1,3-thiazol-4-yl] methylsulfanyl]-*N'*-sulfamoylpropanimidamide

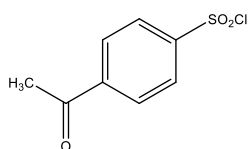
20. At which position omeprazole undergoes metabolism?



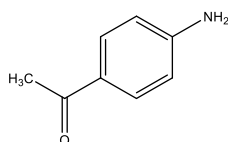
- a. A
- b. B
- c. C
- d. D

21. Which of the following used in synthesis of Acetohexamide?

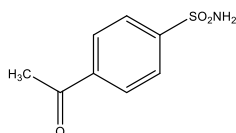
a.



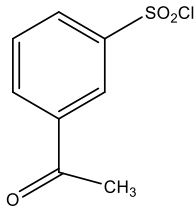
b.



c.



d.



22. Which of the following statement is correct?
- small alkyl group in sulfonylureas leads to increase in hypoglycaemic activity.
 - Sulfonylureas results in influx of potassium.
 - In sulfonylureas, carboxamide moiety increase hypoglycaemic activity.
 - Sulfonylureas act by affecting ATP-sensitive Ca^{++} channel.
23. Which of the following is amino amide local anaesthetics?
- Procaine
 - Lidocaine
 - Benzocaine
 - Tetracaine
24. which of the following statement is wrong with respect to local anaesthetic?
- Local anaesthetic bind to binding site in its ionised form
 - Local anaesthetic passes through lipid membrane.
 - Local anaesthetic block sodium channel.
 - Local anaesthetic passe through membrane by changing their form.
25. Which of the following is amino ether local acts as local anaesthetics?
- Dicyclomine
 - Pramoxine
 - Mepivacaine
 - Eugenol

ANSWERS

1. (c) 2. (d) 3. (a) 4. (b) 5. (c) 6. (c) 7. (a) 8. (a) 9. (d) 10. (b) 11. (b) 12. (b) 13. (c) 14. (b)
 15. (c) 16. (a) 17. (b) 18. (b) 19. (a) 20. (a) 21. (b) 22. (c) 23. (b) 24. (d) 25. (b)