

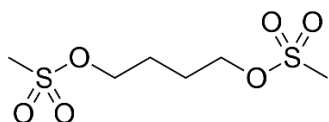
BPH_C_701 (Sem-VII) CBCS

Pharmaceutical chemistry-II

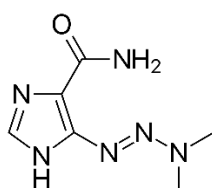
Sample MCQs

1. Identify prodrug used in treatment of breast cancer.

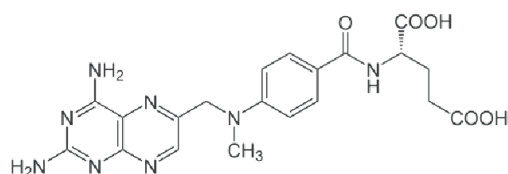
a.



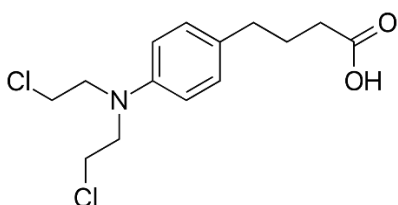
b.



c.



d.



2. Select drug that shows significant interaction with allopurinol

- a. 5-fluouracil
- b. Methotrexate
- c. Chlorambucil
- d. 6-mercaptopurine

3. Choose wrong combination of drug and mechanism

- a. Busulfan - alkylating agent
- b. Doxorubicin – intercalating agent
- c. Vorinostat – tyrosine kinase inhibitor

d. Cytarabine – pyrimidylate synthetase inhibitor

4. Which of the following drug is used in treatment of herpes virus?

a. Amantadine

b. Acyclovir

c. Oseltamivir

d. Azidothymidine

5. Choose following combination of drug and virus

a. Amantadine versus influenza B

b. Zidovudine versus hepatitis B

c. Saquinavir versus hepatitis C

d. Telaprevir versus hepatitis C

6. Lopinavir is used in fixed dose combination with ritonavir

a. It gives synergistic effect

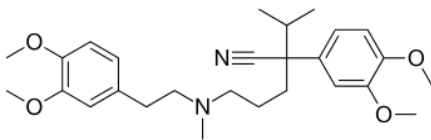
b. Increase duration of action of lopinavir

c. It is inhibitor of CYP-450 CYP-3A

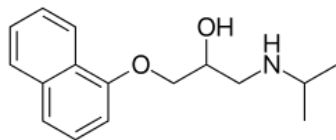
d. Increase elimination half-life of ritonavir

7. Which of the following is non-selective β -blocker?

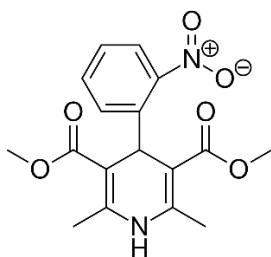
a.



b.



c.



d. None of above

8. Identify correct name of calcium channel blocker

a. (2S,3S)-3-acetoxy-5-[2-(dimethyl amino) ethyl]-2,3-dihydro-2-(4-methoxyphenyl)-1,5-benzothiazepin-4(5H)-one

b. 4-Méthoxy-N-{2-[2-(1-méthyl-2-pipéridinyl) ethyl] phenyl} benzamide

c. 2-amino-N-(2,6-dimethylphenyl) propenamide

d. 2-(diethylamino)-N-(2,6-dimethylphenyl) acetamide

9. Choose correct combination of drug with its mechanism

a. Amiodarone blocks Na⁺, K⁺ channel

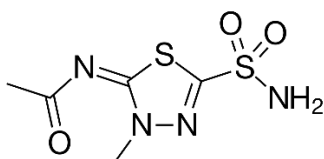
b. Sotalol inhibit Na⁺ channel

c. Encainide inhibit K⁺ channel

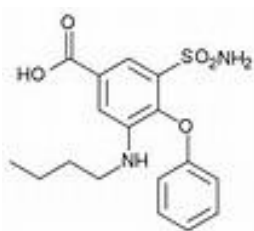
d. Tocainide inhibit Ca⁺⁺ channel

10. Which of the following inhibit Na⁺/K⁺/2Cl⁻ symporter?

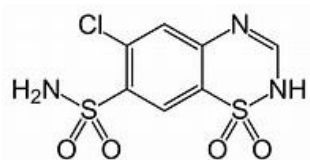
a.



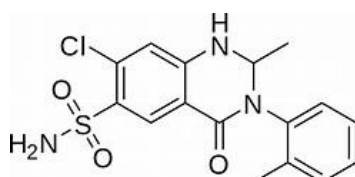
b.



c.



d.

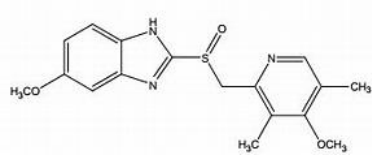


11. Which of the following statement is false about diuretics?
- Potassium sparing diuretics can be useful in combination of loop diuretics for hypertension.
 - Spirolactone work in presence of aldosterone.
 - Amiloride and triamterene produce loss of potassium by same mechanism.
 - Spirolactone produce adrenergic effect.
12. Which of the following is prodrug as ACE inhibitor?
- Lisinopril
 - Benazepril
 - Valsartan
 - Losartan
13. Choose correct statement of drug with its chemical class
- Captopril- dicarboxylate
 - Enalapril – Proline
 - Lisinopril – pyrrolidine
 - Candesartan – triazole
14. which of the following used in the treatment of Benign prostate hyperplasia?
- Prazosin
 - Terazosin
 - Labetolol
 - Carvedilol
15. Which is IUPAC name of drug as β -blocker?
- [4-(4-amino-6,7-dimethoxyquinazolin-2-yl) piperazin-1-yl] -(furan-2-yl) methanone
 - [4-(4-amino-6,7-dimethoxyquinazolin-2-yl) piperazin-1-yl] -(oxolan-2-yl) methanone
 - 5-[3-(*tert*-butylamino)-2-hydroxypropoxy]-1,2,3,4-tetrahydronaphthalene-2,3-diol
 - 7-chloro-3-methyl-4*H*-1 λ ⁶,2,4-benzothiadiazine 1,1-dioxide
16. Identify following as HMG Co-A reductase inhibitor?
- Rosuvastatin
 - Clofibrate
 - Ciprofibrate

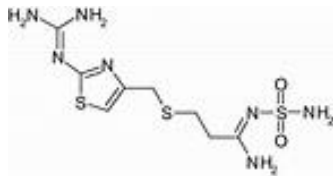
d. Ezetimibe

17. Which of the following is PPIs?

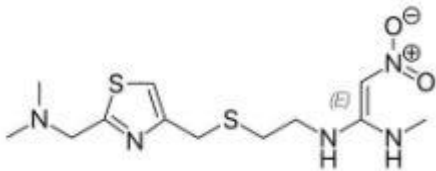
a.



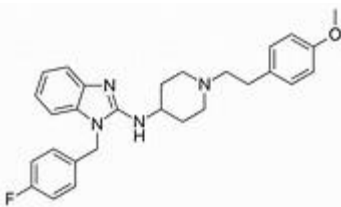
b.



c.



d.



18. Which of the following antihistamine drug belongs to propylamine class?

a. Cetrizine

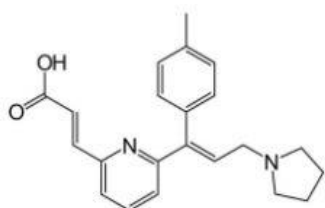
b. Chlorpheniramine

c. Diphenhydramine

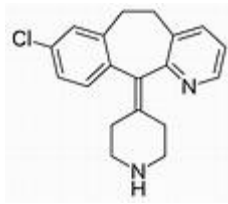
d. Cyproheptadine

19. Which of the following metabolite is H1-antagonist?

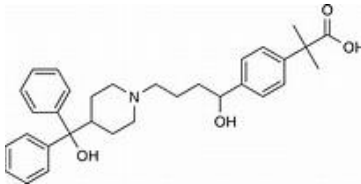
a.



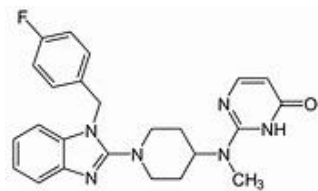
b.



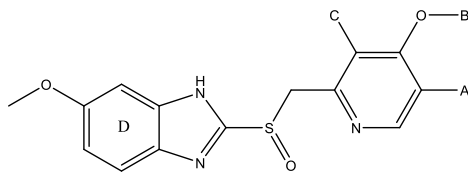
c.



d.



20. At which position omeprazole undergoes metabolism?



a. A

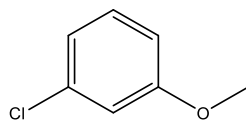
b. B

c. C

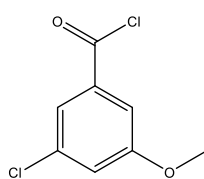
d. D

21. Which of the following used in synthesis of glyburide?

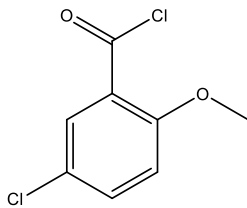
a.



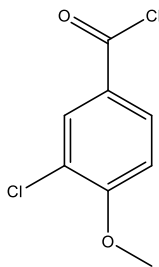
b.



c.



d.



22. Which of the following statement is correct?

- a. small alkyl group in sulfonylureas leads to increase in hypoglycemic activity.
- b. Sulfonylureas results in influx of potassium.
- c. In sulfonylureas, carboxamide moiety increase hypoglycemic activity.
- d. Sulfonylureas act by affecting ATP-sensitive Ca^{++} channel.

23. Biguanide- oral hypoglycaemic drug

- a. Tolbutamide
- b. Acarbose
- c. Metformin
- d. Troglitazone

24. Proposed mechanism for hypoglycemic action of sulfonylureas

- a. Enhancement of insulin release from pancreatic beta cells.
- b. Increase of serum glucagon levels.
- c. Potentiation of insulin effects at target tissues.
- d. None of above

25. Second generation sulfonylureas in management of Type-II diabetes

- a. Glyburide
- b. Glipizide
- c. Glimepride
- d. All of above

ANSWERS

1. (b) 2. (d) 3. (c) 4. (b) 5. (d) 6. (C) 7. (b) 8. (a) 9. (a) 10. (b) 11. (d) 12. (b) 13. (c) 14. (b) 15. (c) 16. (a) 17. (a) 18. (b) 19. (b) 20. (a) 21. (c) 22. (c) 23. (c) 24. (a) 25. (d)